

Stremafix for back anchoring

An alternative to welding for installing Stremaform®



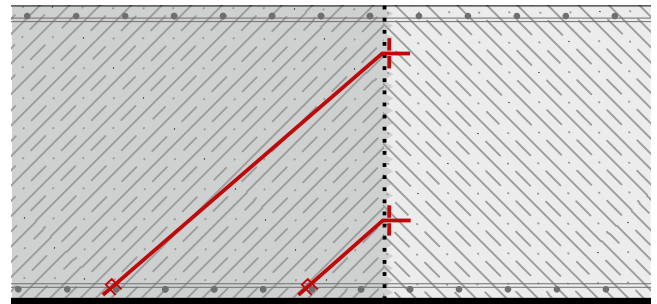
Stremafix for back anchoring of Stremaform®

Stremaform elements are used in construction joints as permanent formwork. **Stremafix** anchors provide a tensile and compression anchoring of the formwork during the installation phase and provide backup against the concrete pressure.

Stremafix rear anchors must always be used when welding of the reinforcement to the Stremaform is not possible or is prohibited. Avoidance of welding will lead to an accelerated workflow.

The eccentric terminals used to hold the **Stremafix** anchors in place can be reused depending upon installation conditions:

- Fast installation with a higher degree of prefabrication
- Welding on site is not necessary
- Construction process is speeded up

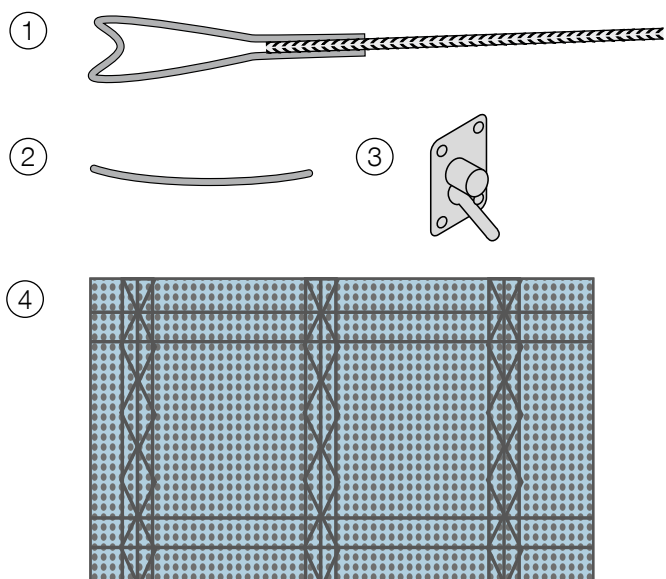


1. pour

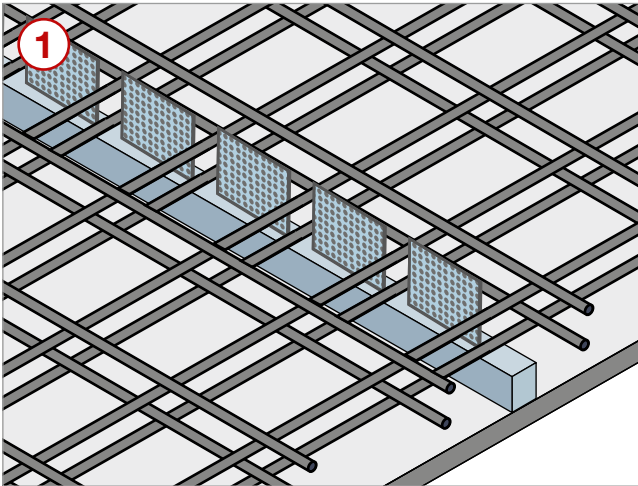
2. pour

System requirements:

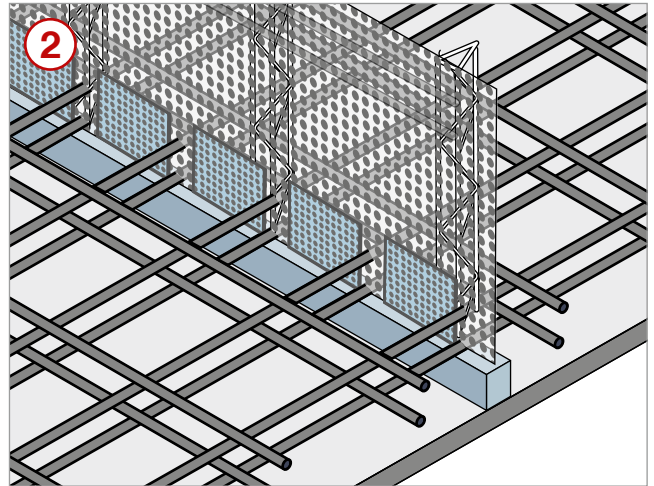
1. Anchor with loop hook
2. Safety bolt
3. Eccentric clamp
4. Stremaform® elements with factory installed girder bracing and additional horizontal bracing to support the Eccentric clamp



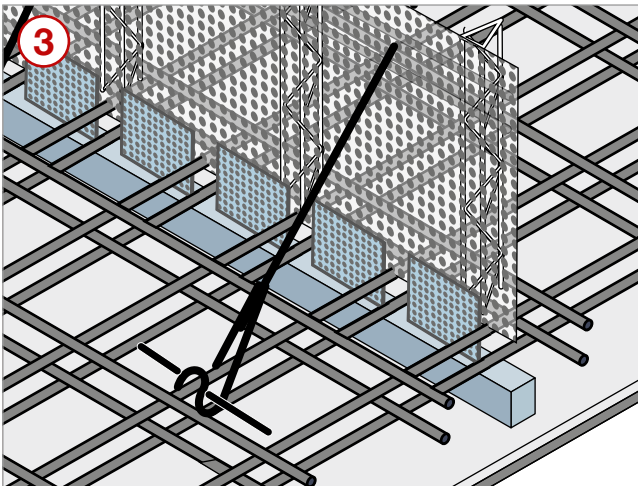
Installation instructions for Stremafix back anchors



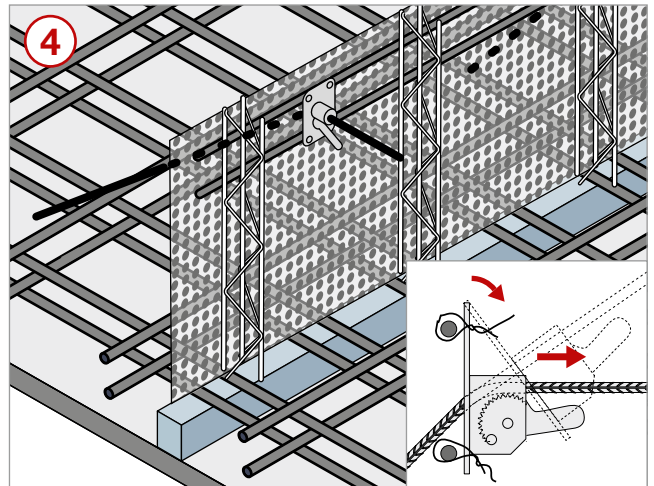
Stremaform® spacer – a special bar spacer to help seal the zone between the lower layers of reinforcement and the top of the spacer.



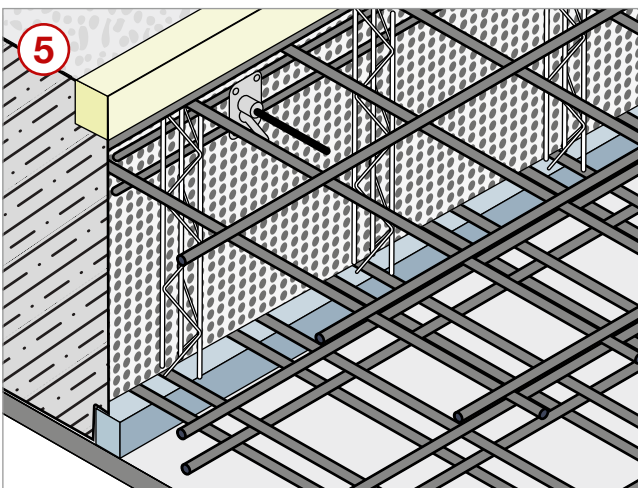
Installation of Stremaform® elements



Fixation of Stremaform® to the lower reinforcement layer using **Stremafix**



Positioning of Stremaform® to the correct angle with the help of the Eccentric clamp



Installation of the upper layers of reinforcement with a top cover bar (usually a timber strip) and concreting of the first concrete pour.

We will send you the following certification upon request:

- Shear resistance in construction joints, Prof. Falconer (Report: YPRO60008)
- Expert Advice on the conformity of Stremaform, the flat material with DIN 1045 – toothed Joint, Prof. Dr. Sippl (Test Report: YPRO60005)
- Application Declaration of the German Railways (Report: YPRO60031)

This Installation Guideline is a condensed description of factors having a direct effect on the performance of Stremafix and is based on the present state of the art. It may be necessary to alter these recommendations, as more information becomes available.

Correct use is the responsibility of the user, if in doubt please consult your local supplier.

The most up to date version of this Guideline is available on our website at: www.maxfrank.com. In addition, our general conditions of sale apply.