

# Product Verification

## Sustainability

Self declared according to LEED Building Design and Construction V4 (2015)

### Product Systems

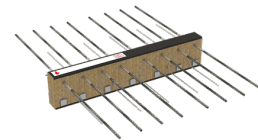
#### EGCOBOX - MM30-VS-C35-h200-REI120-SW

#### Max Frank GmbH & Co. KG

The Max Frank Egccobox® is a load-bearing thermal insulating element for thermal separation of reinforced concrete structural members. The Max Frank Egccobox® consists of an 80 mm thick thermal insulation layer of rock wool (SW) and serves to reduce thermal bridges. Statically, the Egccobox® is determined by a truss model consisting of tension / compression and shear force bars (B500 NR or welded with B500 B).

The Egccobox® is available in different load-bearing levels. These depend on the load and vary in the number and diameter of the reinforcing bars.

<https://www.maxfrank.com/intl-de/produkte/bewehrungstechnik/o4-kragplattenanschluss-egccobox/>



## Product Assessment

### Materials and Resources

Criteria	Product Verification
MR Credit Life-Cycle Impact Reduction - Option 4: Whole-Building Life-Cycle Assessment	EPD available: No
MR Credit BPDO - Environmental Product Declaration - Option 1: Environmental Product Declaration	0 % weighted value
MR Credit BPDO - Environmental Product Declaration - Option 2: Multi-Attribute Optimization	0 % weighted value
MR Credit BPDO - Sourcing of Raw Materials - Option 1: Raw Material Source and Extraction Reporting	0 % weighted value
MR Credit BPDO - Sourcing of Raw Materials - Option 2: Leadership Extraction Practices	0 % weighted value
MR Credit BPDO - Material Ingredients - Option 1: Material Ingredient Reporting	0 % weighted value
MR Credit BPDO - Material Ingredients - Option 2: Material Ingredient Optimization	0 % weighted value
MR Credit BPDO - Material Ingredients - Option 3: Product Manufacturer Supply Chain Optimization	0 % weighted value
Location Valuation Factor	No

### Indoor Environmental Quality

Criteria	Product Verification
EQ Credit Low-Emitting Materials (except Healthcare and Schools)	No

Legend: yes = Product contributes toward satisfying the credit, N/A = Product not relevant in the credit, no = Credit requirements are not proven

## Summary

### The product contributes to the certification:

- The product has an Environmental Product Declaration (EPD), which can be used to calculate the building life cycle assessment under LEED MR Building Life-Cycle Impact Reductions - Option 4: Whole-Building Life-Cycle Assessment: EPD available: No
- Weighted Product Value on Credit BPDO - Environmental Product Declaration - Option 1: Environmental Product Declaration: 0 % weighted value

- Weighted Product Value on Credit BPDO - Environmental Product Declaration - Option 2: Multi-Attribute Optimization: 0 % weighted value
- Weighted Product Value on Credit BPDO - Sourcing of Raw Materials - Option 1: Raw Material Source and Extraction Reporting: 0 % weighted value
- Weighted Product Value on Credit BPDO - Sourcing of Raw Materials - Option 2: Leadership Extraction Practices: 0 % weighted value
- Weighted Product Value on Credit BPDO - Material Ingredients - Option 1: Material Ingredient Reporting: 0 % weighted value
- Weighted Product Value on Credit BPDO - Material Ingredients - Option 2: Material Ingredient Optimization: 0 % weighted value
- Weighted Product Value on Credit BPDO - Material Ingredients - Option 3: Supply Chain Optimization: 0 % weighted value
- Information for Location Valuation Factor is available: No
- The entire product contributes toward satisfying EQ Credit: Low-Emitting Materials: No

## ■ Product Properties

### Ingredients:

SVHC according REACH < 0,1 %: Yes

### Manufacturer:

Are reverse logistics in place for the product? No

Environmental Management System according ISO 14001: No

### Emissions:

Formaldehyde emissions after 28 days according DIN EN 717-1: 0 mg/m<sup>3</sup>

## ■ Product Components

Name	Amount	Material type / Function	DfD	Total Weight	Specific Weight	Portion (%)
tensile bars / compression elements / Shear force bars / fixing bars	8.570		No	8.570	1 kg / kg	72.20 %
Insulation material - rock wool	2.900		No	2.900	1 kg / kg	24.43 %
PE-Covers	0.240		No	0.240	1 kg / kg	2.02 %
Hotmelt adhesive	0.160		No	0.160	1 kg / kg	1.35 %



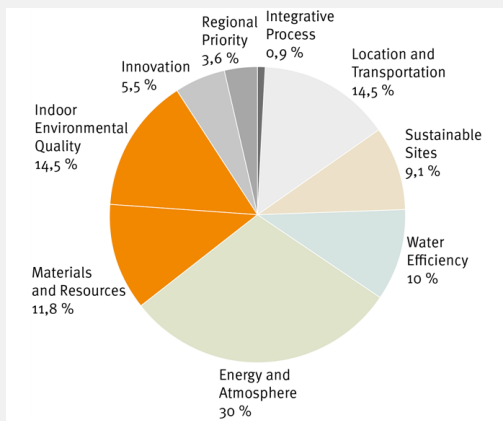
■ System description

This verification is the evaluation and ranking of products in terms of the certification system LEED version 4 (Building Design and Construction). The USGBC (U.S. Green Building Council) generally does not certify products. Therefore the project team or the manufacturer is responsible to declare compliance with respect to the LEED criteria. Notice: This verification is generated by the Assessment Service of BMS. The distribution or publication by third parties is not permitted. The data sheet is not a LEED certification document. The information is based on the manufacturer's specifications. Despite a diligent treatment of all information BMS can not make any warranties about the completeness, reliability and accuracy of this information. The requirements of LEED can be interpreted differently and depend on the project and scope of application. Therefore, BMS cannot accept any liability for the evaluation in terms of the LEED criteria. The user of the data sheet, the user / purchaser of the product and the consultant / planner, who is advising on this product has the duty to check the product for the intended application at their own responsibility. When a new version of this product verification is produced, the previous version loses its validity.

Source: [www.usgbc.org](http://www.usgbc.org)

■ System categories

Category Weighting



Category

Category considered in product verification

Integrative Process (IP)	No
Location and Transportation (LT)	No
Sustainable Sites (SS)	No
Water Efficiency (WE)	No
Energy and Atmosphere (EA)	No
Materials and Ressources (MR)	Yes
Indoor Environmental Quality (EQ)	Yes
Innovation (IN)	No
Regional Priority (RP)	No

Source: LEED v4 - New Construction

# Detailed Verification

Self declared according to LEED Building Design and Construction V4 (2015)

## Materials and Resources

### MR Credit Life-Cycle Impact Reduction - Option 4: Whole-Building Life-Cycle Assessment

The product has an Environmental Product Declaration (EPD), which can be used to calculate the building life cycle assessment under LEED MR Building Life-Cycle Impact Redcuts - Option 4: Whole-Building Life-Cycle Assessment:

EGCOBOX - MM30-VS-C35-h200-REI120-SW	EPD available: No
--------------------------------------	-------------------

An environmental product declaration exists for the product:

EGCOBOX - MM30-VS-C35-h200-REI120-SW	No
tensile bars / compression elements / Shear force bars / fixing bars	No
Insulation material - rock wool	Yes
PE-Covers	No
Hotmelt adhesive	No

EPD Owner of the Declaration:

EGCOBOX - MM30-VS-C35-h200-REI120-SW	No Information
tensile bars / compression elements / Shear force bars / fixing bars	No Information
Insulation material - rock wool	DEUTSCHE ROCKWOOL GmbH & Co. KG
PE-Covers	No Information
Hotmelt adhesive	No Information

EPD Publisher:

EGCOBOX - MM30-VS-C35-h200-REI120-SW	No Information
tensile bars / compression elements / Shear force bars / fixing bars	No Information
Insulation material - rock wool	Institut Bauen und Umwelt e.V. (IBU)
PE-Covers	No Information
Hotmelt adhesive	No Information

**EPD Programme holder:**

<b>EGCOBOX - MM30-VS-C35-h200-REI120-SW</b>	No Information
tensile bars / compression elements / Shear force bars / fixing bars	No Information
Insulation material - rock wool	Institut Bauen und Umwelt e.V. (IBU)
PE-Covers	No Information
Hotmelt adhesive	No Information

**EPD Declaration number:**

<b>EGCOBOX - MM30-VS-C35-h200-REI120-SW</b>	No Information
tensile bars / compression elements / Shear force bars / fixing bars	No Information
Insulation material - rock wool	EPD-DRW-20180119-IBC1-DE
PE-Covers	No Information
Hotmelt adhesive	No Information

**EPD Issue date:**

<b>EGCOBOX - MM30-VS-C35-h200-REI120-SW</b>	No Information
tensile bars / compression elements / Shear force bars / fixing bars	No Information
Insulation material - rock wool	27.08.2018
PE-Covers	No Information
Hotmelt adhesive	No Information

**EPD valid to:**

<b>EGCOBOX - MM30-VS-C35-h200-REI120-SW</b>	No Information
tensile bars / compression elements / Shear force bars / fixing bars	No Information
Insulation material - rock wool	26.08.2023
PE-Covers	No Information
Hotmelt adhesive	No Information

**MR Credit BPDO - Environmental Product Declaration - Option 1: Environmental Product Declaration**
**Weighted Product Value on Credit BPDO - Environmental Product Declaration - Option 1: Environmental Product Declaration:**

<b>EGCOBOX - MM30-VS-C35-h200-REI120-SW</b>	0 % weighted value
---	--------------------

**An environmental product declaration exists for the product:**

<b>EGCOBOX - MM30-VS-C35-h200-REI120-SW</b>	No
tensile bars / compression elements / Shear force bars / fixing bars	No
Insulation material - rock wool	Yes
PE-Covers	No
Hotmelt adhesive	No

**EPD Type:**

<b>EGCOBOX - MM30-VS-C35-h200-REI120-SW</b>	No Information
tensile bars / compression elements / Shear force bars / fixing bars	No Information
Insulation material - rock wool	Product-specific EPD (Type III) conform to ISO 14025, 14040, 14044, and EN 15804 or ISO 21930
PE-Covers	No Information
Hotmelt adhesive	No Information

**MR Credit BPDO - Environmental Product Declaration - Option 2: Multi-Attribute Optimization**
**Weighted Product Value on Credit BPDO - Environmental Product Declaration - Option 2: Multi-Attribute Optimization:**

<b>EGCOBOX - MM30-VS-C35-h200-REI120-SW</b>	0 % weighted value
---	--------------------

**An environmental product declaration exists for the product:**

<b>EGCOBOX - MM30-VS-C35-h200-REI120-SW</b>	No
tensile bars / compression elements / Shear force bars / fixing bars	No
Insulation material - rock wool	Yes
PE-Covers	No
Hotmelt adhesive	No

**Third party certified products that demonstrate impact reduction below industry average in at least three of the LCA-Categories GWP, ODP, AP, EP, POCP and ADPF:**

<b>EGCOBOX - MM30-VS-C35-h200-REI120-SW</b>	No Information
tensile bars / compression elements / Shear force bars / fixing bars	No Information
Insulation material - rock wool	No
PE-Covers	No Information
Hotmelt adhesive	No Information



### MR Credit BPDO - Sourcing of Raw Materials - Option 1: Raw Material Source and Extraction Reporting

Weighted Product Value on Credit BPDO - Sourcing of Raw Materials - Option 1: Raw Material Source and Extraction Reporting:

EGCOBOX - MM30-VS-C35-h200-REI120-SW	0 % weighted value
--------------------------------------	--------------------

There is a corporate sustainability reports (CSR) report from the manufacturer:

EGCOBOX - MM30-VS-C35-h200-REI120-SW	No
tensile bars / compression elements / Shear force bars / fixing bars	No
Insulation material - rock wool	No
PE-Covers	No
Hotmelt adhesive	No

### MR Credit BPDO - Sourcing of Raw Materials - Option 2: Leadership Extraction Practices

Weighted Product Value on Credit BPDO - Sourcing of Raw Materials - Option 2: Leadership Extraction Practices:

EGCOBOX - MM30-VS-C35-h200-REI120-SW	0 % weighted value
--------------------------------------	--------------------

Extended producer responsibility

Content of materials for a closed-loop recycling or take-back programm in the entire product:

EGCOBOX - MM30-VS-C35-h200-REI120-SW	0 %
--------------------------------------	-----

Do you want to enter the content of materials for a closed-loop recycling or take-back programm for the entire product? Otherwise it will be automatically calculated from the components. If you do not have any components for your product, we recommend that you enter here the content of materials for the entire product:

EGCOBOX - MM30-VS-C35-h200-REI120-SW	No Information
tensile bars / compression elements / Shear force bars / fixing bars	No
Insulation material - rock wool	No
PE-Covers	No
Hotmelt adhesive	No Information

Content of materials for a closed-loop recycling or take-back programm:

EGCOBOX - MM30-VS-C35-h200-REI120-SW	No Information
tensile bars / compression elements / Shear force bars / fixing bars	0 %
Insulation material - rock wool	0 %
PE-Covers	No Information
Hotmelt adhesive	No Information

Bio-based materials

Content of SAN-certified bio-based materials in the entire product:

EGCOBOX - MM30-VS-C35-h200-REI120-SW	0 %
--------------------------------------	-----

Wood products

Content of FSC-certified wood-based materials in the entire product:

EGCOBOX - MM30-VS-C35-h200-REI120-SW	0 %
--------------------------------------	-----

Materials reuse

Content of salvaged, refurbished, or reused products or materials in the entire product:

EGCOBOX - MM30-VS-C35-h200-REI120-SW	0 %
--------------------------------------	-----

Recycled content

Creditable recycled content according to LEED for the entire product:

EGCOBOX - MM30-VS-C35-h200-REI120-SW	0 %
--------------------------------------	-----

Postconsumer recycled content for the entire product:

EGCOBOX - MM30-VS-C35-h200-REI120-SW	0 %
tensile bars / compression elements / Shear force bars / fixing bars	85 %
Insulation material - rock wool	0.1 %
PE-Covers	0 %
Hotmelt adhesive	0 %

Do you want to enter the recycled content for the entire product? Otherwise it will be automatically calculated from the components. If you do not have components for your product, we recommend that you enter the recycling percentage for the entire product here:

EGCOBOX - MM30-VS-C35-h200-REI120-SW	No Information
tensile bars / compression elements / Shear force bars / fixing bars	No
Insulation material - rock wool	No
PE-Covers	No
Hotmelt adhesive	No

Postconsumer recycled content of product (creditable):

EGCOBOX - MM30-VS-C35-h200-REI120-SW	No Information
tensile bars / compression elements / Shear force bars / fixing bars	85 %
Insulation material - rock wool	0.1 %
PE-Covers	0 %
Hotmelt adhesive	0 %

**Recycled content post-consumer:**

<b>EGCOBOX - MM30-VS-C35-h200-REI120-SW</b>	No Information
tensile bars / compression elements / Shear force bars / fixing bars	85 wt%
Insulation material - rock wool	0.1 wt%
PE-Covers	25 wt%
Hotmelt adhesive	0 wt%

**Postconsumer recycled content for steel according to LEED:**

<b>EGCOBOX - MM30-VS-C35-h200-REI120-SW</b>	No Information
tensile bars / compression elements / Shear force bars / fixing bars	0 %
Insulation material - rock wool	0 %
PE-Covers	0 %
Hotmelt adhesive	0 %

**The product is made of steel:**

<b>EGCOBOX - MM30-VS-C35-h200-REI120-SW</b>	No
tensile bars / compression elements / Shear force bars / fixing bars	Yes
Insulation material - rock wool	No
PE-Covers	No
Hotmelt adhesive	No

**Recycled content pre-consumer:**

<b>EGCOBOX - MM30-VS-C35-h200-REI120-SW</b>	No Information
tensile bars / compression elements / Shear force bars / fixing bars	46.5 wt%
Insulation material - rock wool	24.6 wt%
PE-Covers	0 wt%
Hotmelt adhesive	0 wt%

**Preconsumer recycled content for the entire product:**

<b>EGCOBOX - MM30-VS-C35-h200-REI120-SW</b>	0 %
tensile bars / compression elements / Shear force bars / fixing bars	46.5 %
Insulation material - rock wool	24.6 %
PE-Covers	0 %
Hotmelt adhesive	0 %

## ■ MR Credit BPDO - Material Ingredients - Option 1: Material Ingredient Reporting

**Weighted Product Value on Credit BPDO - Material Ingredients - Option 1: Material Ingredient Reporting:**

EGCOBOX - MM30-VS-C35-h200-REI120-SW	0 % weighted value
--------------------------------------	--------------------

**A manufacturer inventory with all ingredients (to at least 0.1 %) identified by CASRN exists for the product:**

EGCOBOX - MM30-VS-C35-h200-REI120-SW	Yes
tensile bars / compression elements / Shear force bars / fixing bars	No
Insulation material - rock wool	No
PE-Covers	Yes
Hotmelt adhesive	Yes

**A Health Product Declaration (HPD) exists for the product:**

EGCOBOX - MM30-VS-C35-h200-REI120-SW	No Information
tensile bars / compression elements / Shear force bars / fixing bars	No
Insulation material - rock wool	No
PE-Covers	No
Hotmelt adhesive	No

**Certified according Declare - all ingredients have been evaluated and disclosed down to 0,1 % = 1000 ppm:**

EGCOBOX - MM30-VS-C35-h200-REI120-SW	No Information
tensile bars / compression elements / Shear force bars / fixing bars	No
Insulation material - rock wool	No
PE-Covers	No
Hotmelt adhesive	No

**Certified according Product Lens:**

EGCOBOX - MM30-VS-C35-h200-REI120-SW	No Information
tensile bars / compression elements / Shear force bars / fixing bars	No
Insulation material - rock wool	No
PE-Covers	No
Hotmelt adhesive	No

**Certified according Cradle to Facts - NSF/ANSI 336: Sustainability Assessment for Commercial Furnishings Fabric:**

<b>EGCOBOX - MM30-VS-C35-h200-REI120-SW</b>	No Information
tensile bars / compression elements / Shear force bars / fixing bars	No
Insulation material - rock wool	No
PE-Covers	No
Hotmelt adhesive	No

**Assessed according ANSI/BIFMA e3 Furniture Sustainability standard - Product earned at least 3 points under 7.5.1.3 Advanced Level in e3-2014 or 3 points under 7.4.1.3 Advanced Level in e3-2012:**

<b>EGCOBOX - MM30-VS-C35-h200-REI120-SW</b>	No Information
tensile bars / compression elements / Shear force bars / fixing bars	No
Insulation material - rock wool	No
PE-Covers	No
Hotmelt adhesive	No

**Certified with Cradle to Cradle:**

<b>EGCOBOX - MM30-VS-C35-h200-REI120-SW</b>	No Information
tensile bars / compression elements / Shear force bars / fixing bars	No
Insulation material - rock wool	No
PE-Covers	No
Hotmelt adhesive	No

**Cradle to Cradle Standard Version:**

<b>EGCOBOX - MM30-VS-C35-h200-REI120-SW</b>	No Information
tensile bars / compression elements / Shear force bars / fixing bars	no entry
Insulation material - rock wool	no entry
PE-Covers	No Information
Hotmelt adhesive	no entry

**Cradle to Cradle Level:**

<b>EGCOBOX - MM30-VS-C35-h200-REI120-SW</b>	No Information
tensile bars / compression elements / Shear force bars / fixing bars	no entry
Insulation material - rock wool	no entry
PE-Covers	No Information
Hotmelt adhesive	no entry

**Certified with Cradle to Cradle Material Health:**

<b>EGCOBOX - MM30-VS-C35-h200-REI120-SW</b>	No Information
tensile bars / compression elements / Shear force bars / fixing bars	No
Insulation material - rock wool	No
PE-Covers	No
Hotmelt adhesive	No

**Cradle to Cradle Material Health Level:**

<b>EGCOBOX - MM30-VS-C35-h200-REI120-SW</b>	No Information
tensile bars / compression elements / Shear force bars / fixing bars	no entry
Insulation material - rock wool	no entry
PE-Covers	No Information
Hotmelt adhesive	No Information

**For Cradle to Cradle Material Health are at least 90% of materials assessed by weight:**

<b>EGCOBOX - MM30-VS-C35-h200-REI120-SW</b>	No Information
tensile bars / compression elements / Shear force bars / fixing bars	No
Insulation material - rock wool	No
PE-Covers	No Information
Hotmelt adhesive	No Information

**MR Credit BPDO - Material Ingredients - Option 2: Material Ingredient Optimization**
**Weighted Product Value on Credit BPDO - Material Ingredients - Option 2: Material Ingredient Optimization:**

<b>EGCOBOX - MM30-VS-C35-h200-REI120-SW</b>	0 % weighted value
---	--------------------

The product contains no ingredients listed on the REACH Authorization list – Annex XIV, the Restriction list – Annex XVII and the SVHC candidate list. This is proved down to fully inventoried chemical ingredients to 100 ppm (0,01 %):

<b>EGCOBOX - MM30-VS-C35-h200-REI120-SW</b>	Yes
tensile bars / compression elements / Shear force bars / fixing bars	No
Insulation material - rock wool	No
PE-Covers	No Information
Hotmelt adhesive	Yes

The Product have fully inventoried chemical ingredients to 100 ppm and no Benchmark 1 hazard according to GreenScreen v1.2 Benchmark. The product is assessed with "GreenScreen List Translator":

<b>EGCOBOX - MM30-VS-C35-h200-REI120-SW</b>	No Information
tensile bars / compression elements / Shear force bars / fixing bars	No
Insulation material - rock wool	No
PE-Covers	No Information
Hotmelt adhesive	No

The Product have fully inventoried chemical ingredients to 100 ppm and no Benchmark 1 hazard according to GreenScreen v1.2 Benchmark. The product is assessed with "GreenScreen Assessment":

<b>EGCOBOX - MM30-VS-C35-h200-REI120-SW</b>	No Information
tensile bars / compression elements / Shear force bars / fixing bars	No
Insulation material - rock wool	No
PE-Covers	No Information
Hotmelt adhesive	No

**Certified with Cradle to Cradle:**

<b>EGCOBOX - MM30-VS-C35-h200-REI120-SW</b>	No Information
tensile bars / compression elements / Shear force bars / fixing bars	No
Insulation material - rock wool	No
PE-Covers	No
Hotmelt adhesive	No

**Cradle to Cradle Standard Version:**

<b>EGCOBOX - MM30-VS-C35-h200-REI120-SW</b>	No Information
tensile bars / compression elements / Shear force bars / fixing bars	no entry
Insulation material - rock wool	no entry
PE-Covers	No Information
Hotmelt adhesive	no entry

**Cradle to Cradle Level:**

<b>EGCOBOX - MM30-VS-C35-h200-REI120-SW</b>	No Information
tensile bars / compression elements / Shear force bars / fixing bars	no entry
Insulation material - rock wool	no entry
PE-Covers	No Information
Hotmelt adhesive	no entry

### MR Credit BPDO - Material Ingredients - Option 3: Product Manufacturer Supply Chain Optimization

Weighted Product Value on Credit BPDO - Material Ingredients - Option 3: Supply Chain Optimization:

EGCOBOX - MM30-VS-C35-h200-REI120-SW	0 % weighted value
--------------------------------------	--------------------

Environmental Management System according ISO 14001:

EGCOBOX - MM30-VS-C35-h200-REI120-SW	No
tensile bars / compression elements / Shear force bars / fixing bars	No
Insulation material - rock wool	No
PE-Covers	No
Hotmelt adhesive	No

Manufacturer is certified according OHSAS 18000 - Health and Safety Management System:

EGCOBOX - MM30-VS-C35-h200-REI120-SW	No
tensile bars / compression elements / Shear force bars / fixing bars	No
Insulation material - rock wool	No
PE-Covers	No
Hotmelt adhesive	No

### Location Valuation Factor

Information for Location Valuation Factor is available:

EGCOBOX - MM30-VS-C35-h200-REI120-SW	No
--------------------------------------	----

Place of raw material extraction (e.g D-70563 Stuttgart):

EGCOBOX - MM30-VS-C35-h200-REI120-SW	No Information
tensile bars / compression elements / Shear force bars / fixing bars	No Information
Insulation material - rock wool	No Information
PE-Covers	No Information
Hotmelt adhesive	No Information

Place of manufacture (e.g. D-70563 Stuttgart):

EGCOBOX - MM30-VS-C35-h200-REI120-SW	No Information
tensile bars / compression elements / Shear force bars / fixing bars	47475 Kamp-Lintfort
Insulation material - rock wool	No Information
PE-Covers	No Information
Hotmelt adhesive	No Information



Place of purchase incl. distribution (e.g. D-70563 Stuttgart):

EGCOBOX - MM30-VS-C35-h200-REI120-SW	No Information
tensile bars / compression elements / Shear force bars / fixing bars	No Information
Insulation material - rock wool	No Information
PE-Covers	No Information
Hotmelt adhesive	No Information

The distance between place of raw material extraction and manufacture is less than 100 miles/160 km:

EGCOBOX - MM30-VS-C35-h200-REI120-SW	No
tensile bars / compression elements / Shear force bars / fixing bars	No Information
Insulation material - rock wool	No
PE-Covers	No Information
Hotmelt adhesive	No Information

## Indoor Environmental Quality

### EQ Credit Low-Emitting Materials (except Healthcare and Schools)

The entire product contributes toward satisfying EQ Credit: Low-Emitting Materials:

EGCOBOX - MM30-VS-C35-h200-REI120-SW	No
--------------------------------------	----

The product contributes toward satisfying EQ Credit 4: Low-Emitting Materials:

EGCOBOX - MM30-VS-C35-h200-REI120-SW	No
tensile bars / compression elements / Shear force bars / fixing bars	No Information
Insulation material - rock wool	No
PE-Covers	No Information
Hotmelt adhesive	No Information

The product is an adhesive or sealant:

EGCOBOX - MM30-VS-C35-h200-REI120-SW	No
tensile bars / compression elements / Shear force bars / fixing bars	No
Insulation material - rock wool	No
PE-Covers	No
Hotmelt adhesive	Yes

Ceilings, walls, thermal, and acoustic insulation

The entire product contributes toward satisfying EQ Credit 4: Low Emitting Materials, Category Ceilings, walls, thermal, and acoustic insulation:

EGCOBOX - MM30-VS-C35-h200-REI120-SW	No
--------------------------------------	----

The product contributes toward satisfying EQ Credit 4: Low Emitting Materials, Category Ceilings, walls, thermal, and acoustic insulation:

EGCOBOX - MM30-VS-C35-h200-REI120-SW	No
tensile bars / compression elements / Shear force bars / fixing bars	No Information
Insulation material - rock wool	No
PE-Covers	No Information
Hotmelt adhesive	No Information

The product is a ceiling, wall, acoustic or thermal insulation material:

EGCOBOX - MM30-VS-C35-h200-REI120-SW	Yes
tensile bars / compression elements / Shear force bars / fixing bars	No
Insulation material - rock wool	Yes
PE-Covers	No
Hotmelt adhesive	No

TVOC after 14 days:

EGCOBOX - MM30-VS-C35-h200-REI120-SW	$\leq 0 \text{ mg/m}^3$
tensile bars / compression elements / Shear force bars / fixing bars	No Information
Insulation material - rock wool	No Information
PE-Covers	No Information
Hotmelt adhesive	No Information

Formaldehyde emissions according DIN EN 717-1:

EGCOBOX - MM30-VS-C35-h200-REI120-SW	$\leq 0 \text{ mg/m}^3$
tensile bars / compression elements / Shear force bars / fixing bars	No Information
Insulation material - rock wool	No Information
PE-Covers	No Information
Hotmelt adhesive	No Information

**Emission testing method according CDPH Standard Method v1.1-2010:**

<b>EGCOBOX - MM30-VS-C35-h200-REI120-SW</b>	No
tensile bars / compression elements / Shear force bars / fixing bars	No Information
Insulation material - rock wool	No
PE-Covers	No Information
Hotmelt adhesive	No Information

**Emission testing method according AgBB Testing and Evaluation Scheme (2010):**

<b>EGCOBOX - MM30-VS-C35-h200-REI120-SW</b>	No
tensile bars / compression elements / Shear force bars / fixing bars	No Information
Insulation material - rock wool	No
PE-Covers	No Information
Hotmelt adhesive	No Information

**Emission testing method according ISO 16000-3: 2010, ISO 16000-6: 2011, ISO 16000-9: 2006, ISO 16000-11:2006 either in conjunction with AgBB, or with French legislation on VOC emission class labeling:**

<b>EGCOBOX - MM30-VS-C35-h200-REI120-SW</b>	No
tensile bars / compression elements / Shear force bars / fixing bars	No Information
Insulation material - rock wool	No
PE-Covers	No Information
Hotmelt adhesive	No Information

**Emission testing method according DIBt testing method (2010):**

<b>EGCOBOX - MM30-VS-C35-h200-REI120-SW</b>	No
tensile bars / compression elements / Shear force bars / fixing bars	No Information
Insulation material - rock wool	No
PE-Covers	No Information
Hotmelt adhesive	No Information

#### ■ Contact Details Manufacturer

##### Max Frank GmbH & Co. KG

Mitterweg 1  
94339 Leiblfing  
DE  
<http://www.maxfrank.de/>



#### ■ Disclaimer

This verification is the evaluation and ranking of products in terms of the certification system LEED version 4 (Building Design and Construction). The USGBC (U.S. Green Building Council) generally does not certify products. Therefore the project team or the manufacturer is responsible to declare compliance with respect to the LEED criteria. Notice: This verification is generated by the Assessment Service of BMS. The distribution or publication by third parties is not permitted. The data sheet is not a LEED certification document. The information is based on the manufacturer's specifications. Despite a diligent treatment of all information BMS can not make any warranties about the completeness, reliability and accuracy of this information. The requirements of LEED can be interpreted differently and depend on the project and scope of application. Therefore, BMS cannot accept any liability for the evaluation in terms of the LEED criteria. The user of the data sheet, the user / purchaser of the product and the consultant / planner, who is advising on this product has the duty to check the product for the intended application at their own responsibility. When a new version of this product verification is produced, the previous version loses its validity.