

## Tender / Order form Stremaform® construction joints carrying cage for rubber/PVC waterstop - slab

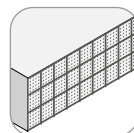
This order sheet has been designed to document your project requirements quickly and efficiently. Please send form to the below address and we will provide a quotation for your requirements:

MAX FRANK Group  
Mitterweg 1  
94339 Leiblfing  
+49 9427 189-0  
info@maxfrank.com

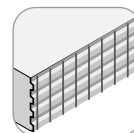
Project name: .....  
Site address: .....  
Site contact: .....

Tender  
Order

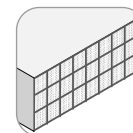
### Design options surface



standard

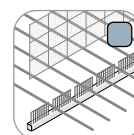
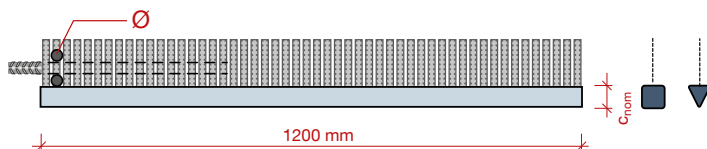


indented joint according to EC2

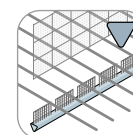


fine mesh for free flowing, self compacting concrete

### Stremaform® spacer for efficient mounting

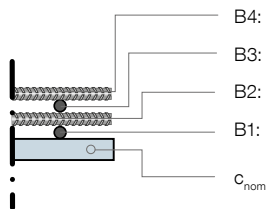


with Stremaform® spacer (square bar)



with Stremaform® spacer (triangular bar)

joint length L: ..... mm  
B4: 4th layer - Ø: ..... mm  
B3: 3rd layer - Ø: ..... mm  
B2: 2nd layer - Ø: ..... mm  
B1: 1st layer - Ø: ..... mm  
C<sub>nom</sub>



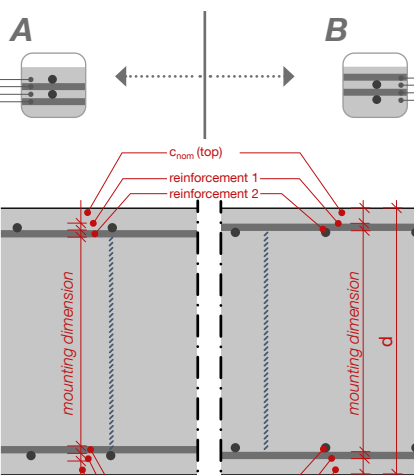
length [mm]	C <sub>nom</sub> [mm]	C <sub>nom</sub> [mm]
1200	35	30
	40	35
	45	40
	50	50
	60	60
	75	

### Layout and reinforcement situation (A or B)

slab thickness d ..... mm

top:

top cover C<sub>nom top</sub> ..... mm  
T1: 1st layer Ø ..... mm  
T2: 2nd layer Ø ..... mm  
T3: 3rd layer Ø ..... mm  
T4: 4th layer Ø ..... mm



top:

top cover C<sub>nom top</sub> ..... mm  
T1: 1st layer Ø ..... mm  
T2: 2nd layer Ø ..... mm  
T3: 3rd layer Ø ..... mm  
T4: 4th layer Ø ..... mm

mounting dimension EBM ..... mm

mounting dimension EBM ..... mm

bottom:

B4: 4th layer Ø ..... mm  
B3: 3rd layer Ø ..... mm  
B2: 2nd layer Ø ..... mm  
B1: 1st layer Ø ..... mm  
bottom cover C<sub>nom bottom</sub> ..... mm

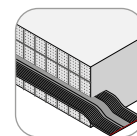
bottom:

B4: 4th layer Ø ..... mm  
B3: 3rd layer Ø ..... mm  
B2: 2nd layer Ø ..... mm  
B1: 1st layer Ø ..... mm  
bottom cover C<sub>nom bottom</sub> ..... mm

### Stiffening

The design of the stiffening is selected by us according to the installation dimension. If you require an individual design, please note this below!

# Order form - Stremaform® construction joints carrying cage for rubber/PVC waterstop

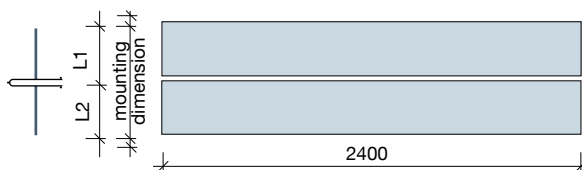


design level 1

design level 2

design level 3 - Please send drawings

## Position of the waterstop



mounting dimension EBM: ..... mm

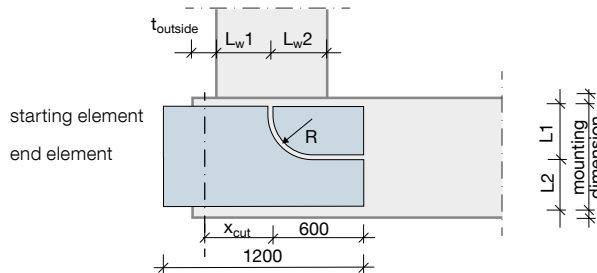
waterstop in centre:    yes    no

top distance:    (L1) ..... mm

bottom distance: (L2) ..... mm

Please mark up any height offsets!

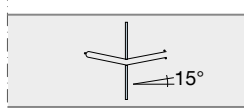
## Wall transition unit



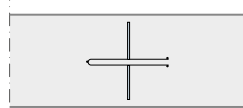
**wall dimensions**  
 $t_{outside}$  ..... mm  
 $L_{w1}$  ..... mm  
 $L_{w2}$  ..... mm

**slab dimensions**  
 $x_{out}$  ..... mm  
 $(L_{w1} + t_{outside} - \text{concrete cover})$   
**transition radius R**  
 (standard) 150 mm .  
 200 mm    250 mm .

## Rw



V-shaped (standard)



straight (tailored design)

## type of of rubber/PVC waterstop

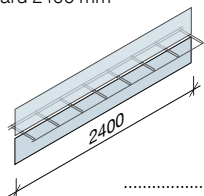
manufacturer .....

type .....

## Units

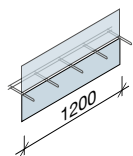
available shapes (standard)

① Standard 2400 mm



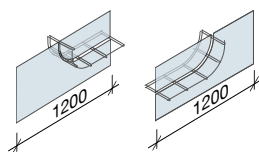
..... pcs.

② Standard 1200 mm



..... pcs.

③ Wall transition unit



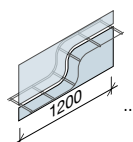
left

right

..... pcs.

..... pcs.

④ Height offset



..... pcs.

