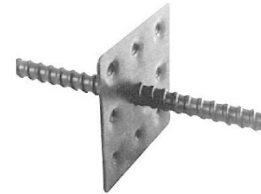


Technical Data Sheet

Tie bar with water stop made of welded steel plate

Shutter ties are used to ensure the wall thickness of structures and components made of reinforced concrete before and during concreting.



Product

Description

The shutter tie consists of a tie bar Ø15mm, a centrally welded steel plate 120x120mm and a steel-plastic cone on both sides. After striking, the reusable steel plastic cone is removed and the remaining opening is closed.

Uses

- Walls with a thickness of 25-500cm
- Waterproof structures
- Constructions used for containment, filling and handling of water endangering substances

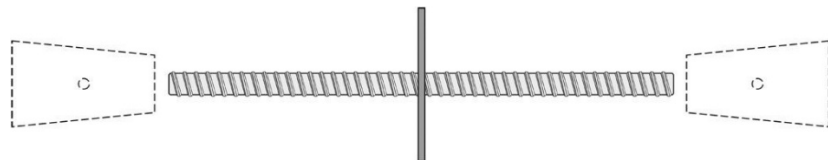
Characteristics / advantages

Fulfills the requirements of the DAfStb guideline on concrete construction when handling with water endangering substances, edition March-2011

Material Properties

Tie bar Ø 15mm	max L=500cm	
Concrete cover	50mm	
water stop made of welded steel plate	120 x 120 x 2mm	
Steel-plastic cone	dimension working load, striking time	Ø40/60 x 100mm 90kN < 3Tage

Systemsketch:



Disclaimer / Notes:

All technical data stated in this TDS are based on laboratory tests. Actual measured data may vary due to circumstances beyond our control. Recommendations with regard to product application given in the present technical data sheet for practical assistance of product users are based on our experience and our present scientific and practical body of knowledge. These recommendations, however, are given without engagement and do not establish a contractual relationship or subsidiary duties. These recommendations do not relieve users of their liability and of their own responsibility to test, whether our product is adequate for the intended purpose of application. Please refer to the latest edition of this Technical Data Sheet on our web presence www.maxfrank.com